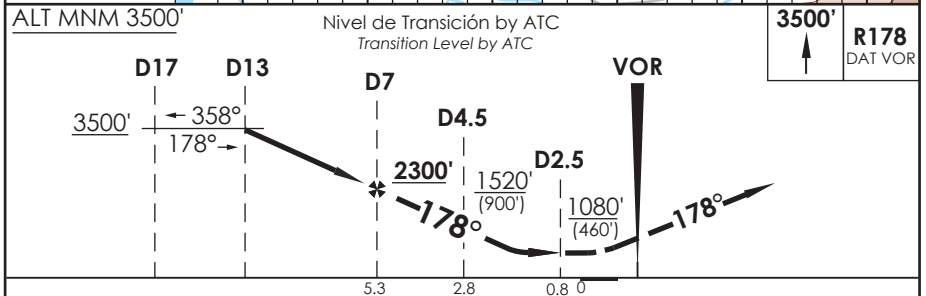
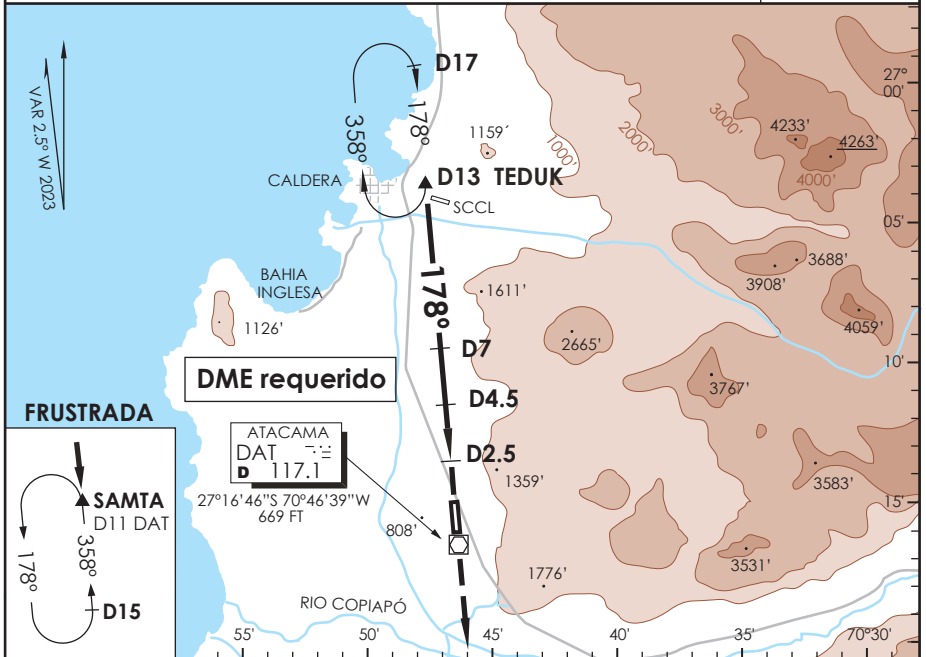


# AD. DESIERTO DE ATACAMA CALDERA - CHILE

SCAT IAC 3  
VOR Rwy 17

APP IQUIQUE RADAR 120.3/128.3 <i>Iquique Radar Approach</i>		TORRE ATACAMA <i>Atacama Tower</i>		118.3	CONTROL TERRESTRE <i>Ground Control</i>		121.6
VOR DAT <b>117.1</b>	FINAL APCH CRS <b>178°</b>	MNM ALT D 7 <b>2300'</b>	MDA <b>1080'(460')</b>	AD Elev. <b>670'</b> THR 17 Elev. <b>620'</b>		<div style="border: 1px solid black; border-radius: 50%; width: 60px; height: 60px; display: flex; align-items: center; justify-content: center; margin: 0 auto;">7000 FT</div> <p>MSA 25 NM DAT</p>	
<p>APCH FRUSTRADA: Ascenso 3500' R178 VOR DAT, ingrese HLDG SAMTA 358° izquierdo o según autorización ATC.</p> <p><i>Missed Apch: Climb to 3500' on R178 DAT VOR, enter on HLDG SAMTA 358° left or according to ATC clearance.</i></p>							



UNIFORME	DIRECTO RWY 17 <i>Straight in RWY 17</i>				CIRCULANDO OESTE <i>Circling West</i>	ALTN <i>Alternate Minimums</i>
	MDA <b>1080'(460')</b>					
	ALSF-1		WO ALSF-1			
A	1.2 Km		1.6 Km		1120' (450')	VER PAG. GEN 2.19
B	1.6 Km		2.0 Km		1.6 Km	
C			2.4 Km		2.4 Km	
D					3.2 Km	
Veloc. Terrestre Kts		80	100	120	140	160
Angulo DES 2,90°		410'	513'	616'	718'	821'
MAPt en D2.5						

CAMBIO: VAR / NR IAC  
Change: VAR / NR IAC

DGAC AMDT 96

16 MAYO 2024

DASA / SECCION IAS-MAP